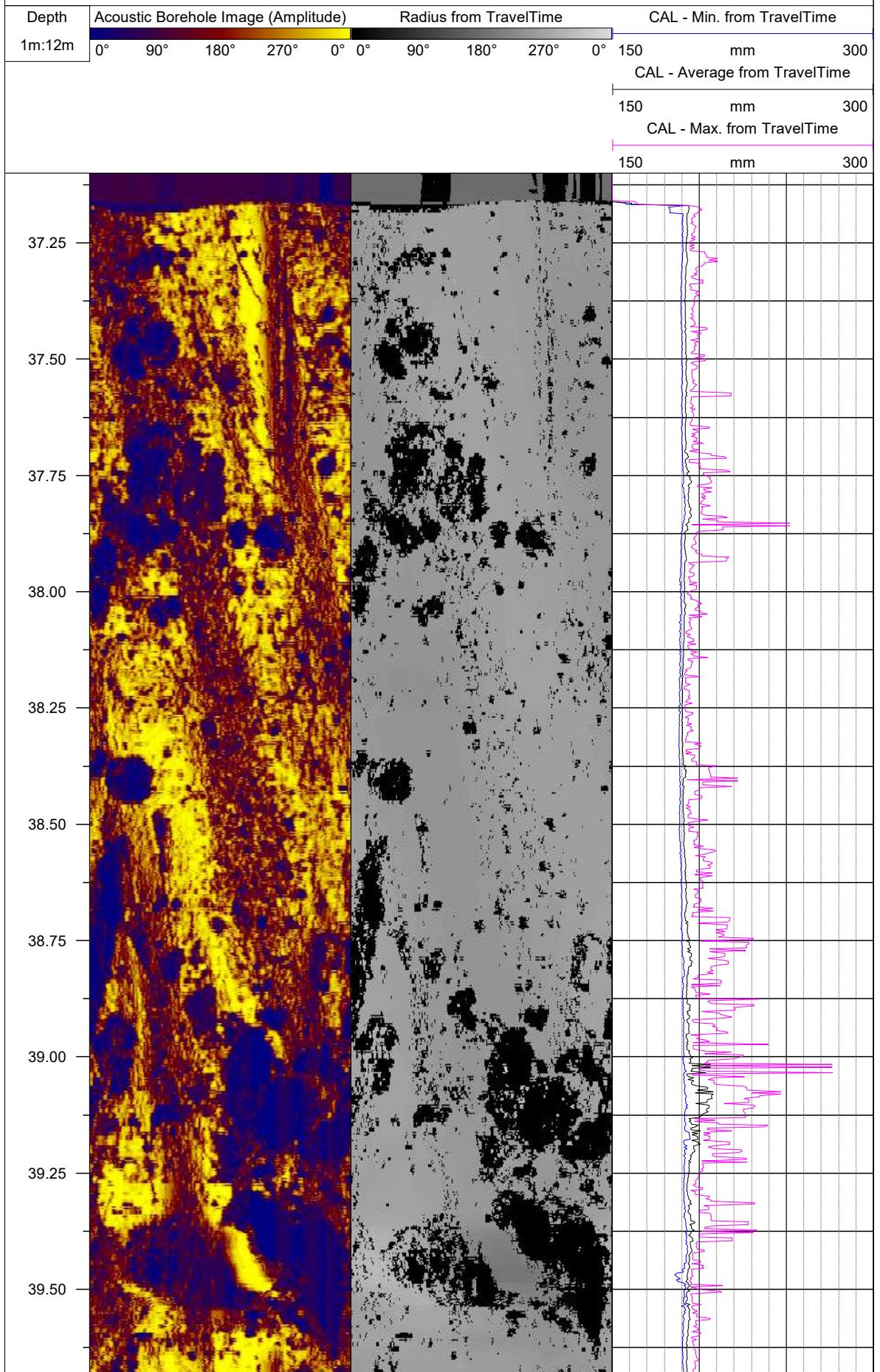


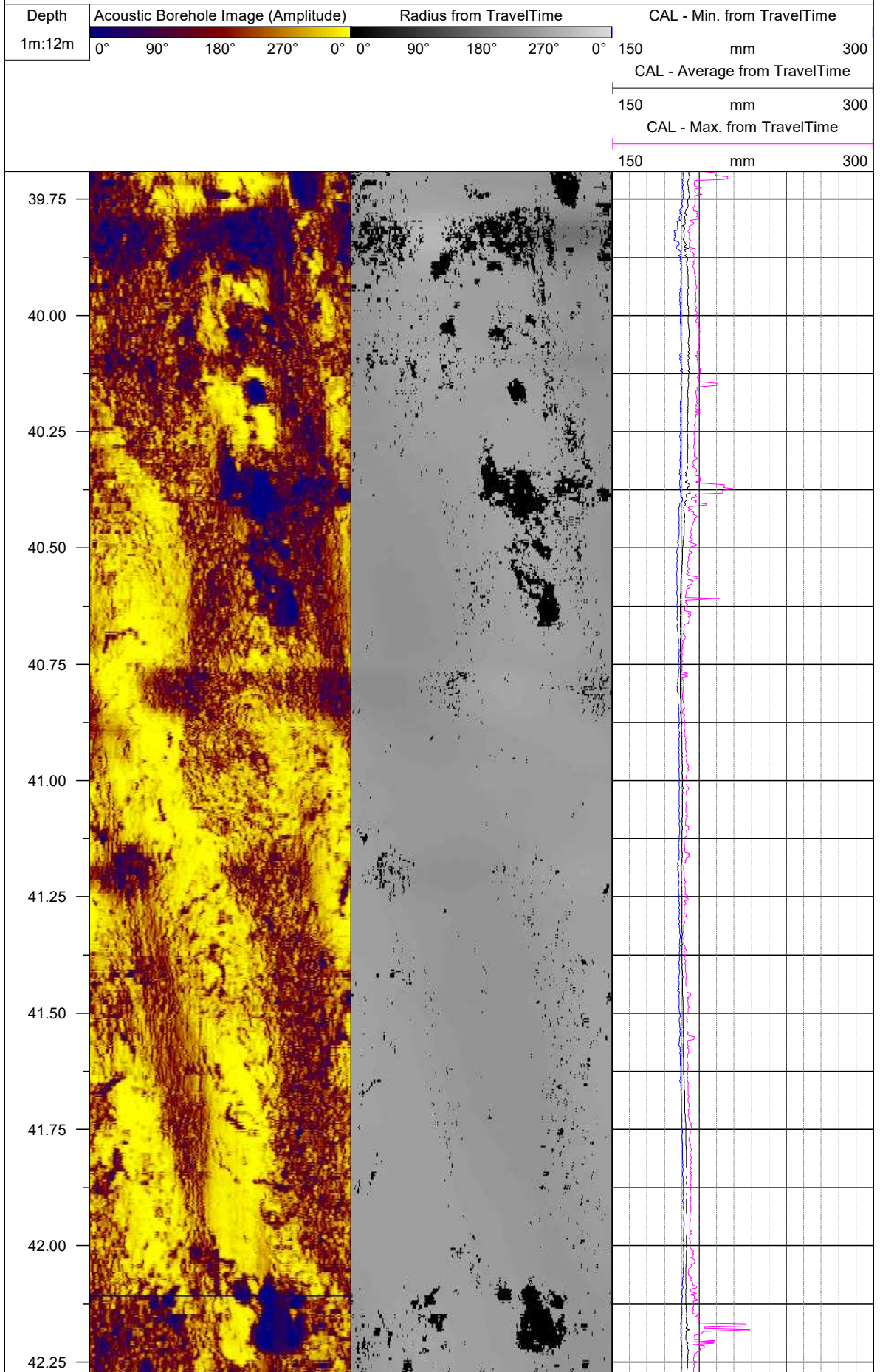
# Acoustic Borehole Imager (ABI) - Well R1, Hagen-Steltenberg

- Section: 37.1 - 133.6 m (reference: top casing), 17. May 2022
- Water level at 37.16m
- Left: Amplitude image of the borehole wall (ABI), contrast enhanced
- Mid: Radius values from travelttime
- Right: Acoustic (ABI) calliper from min., avg. and max. travelttime



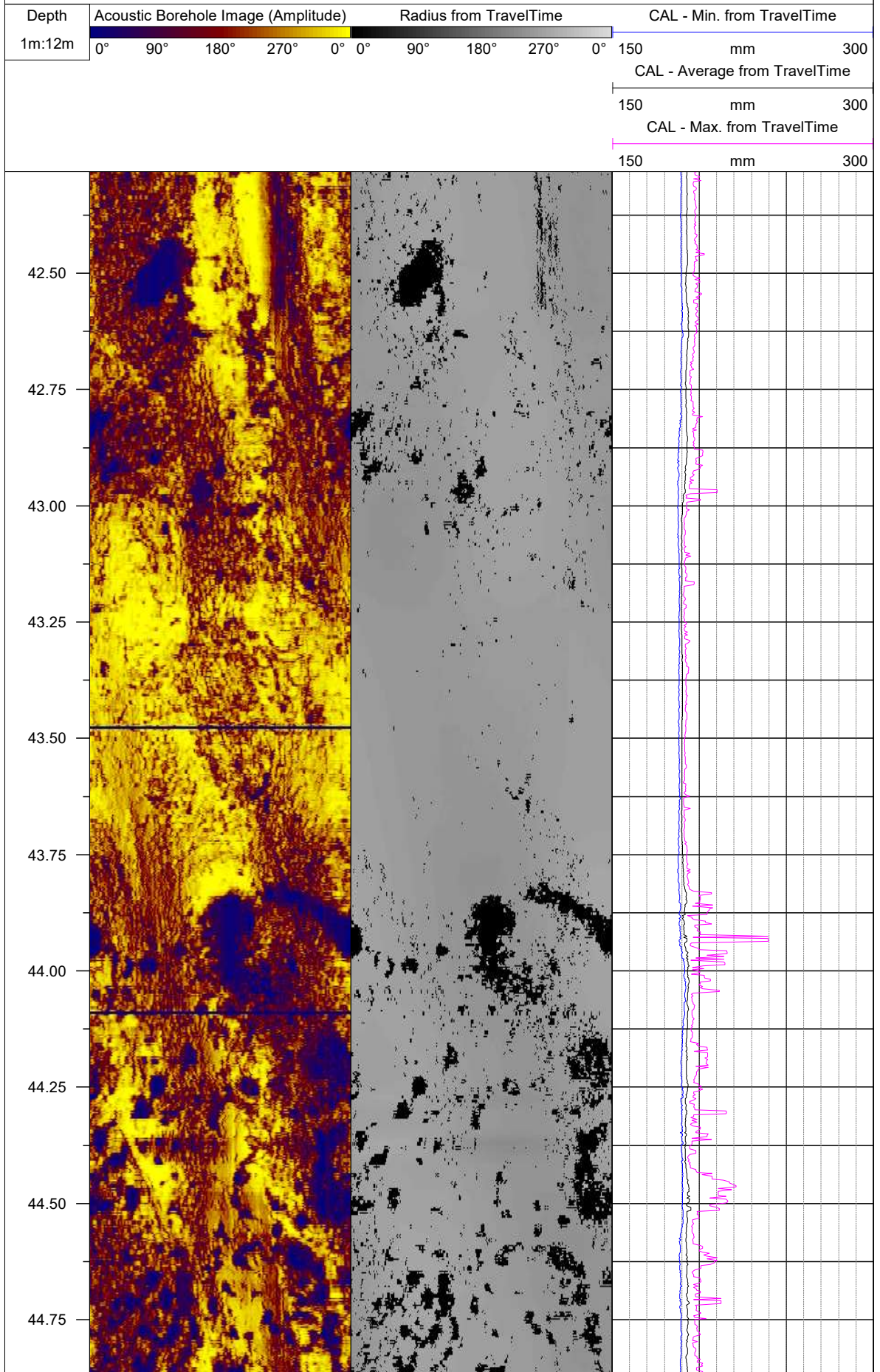
# Acoustic Borehole Imager (ABI) - Well R1, Hagen-Steltenberg

- Section: 37.1 - 133.6 m (reference: top casing), 17. May 2022
- Water level at 37.16m
- Left: Amplitude image of the borehole wall (ABI), contrast enhanced
- Mid: Radius values from travelttime
- Right: Acoustic (ABI) calliper from min., avg. and max. travelttime



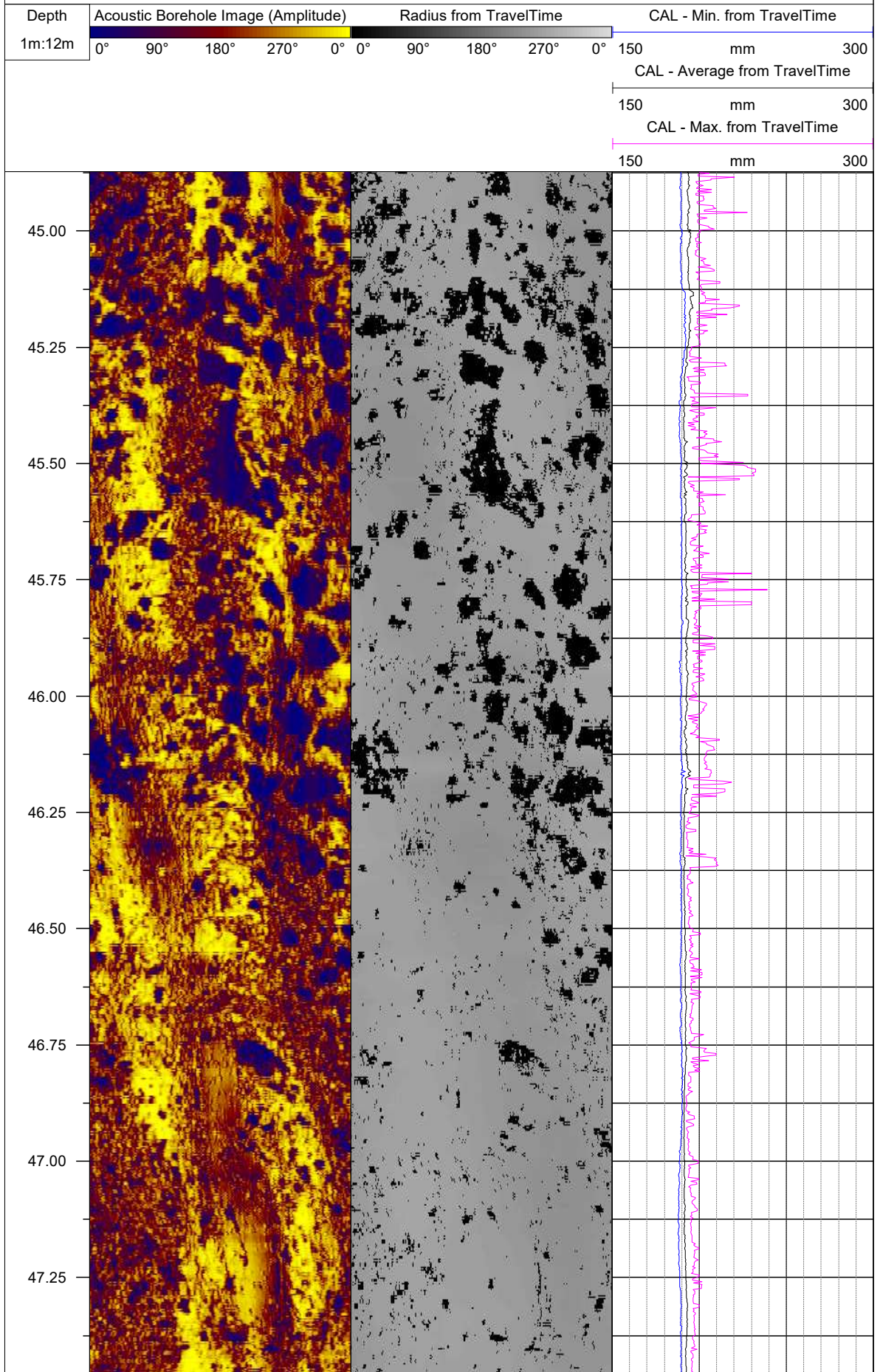
# Acoustic Borehole Imager (ABI) - Well R1, Hagen-Steltenberg

- Section: 37.1 - 133.6 m (reference: top casing), 17. May 2022
- Water level at 37.16m
- Left: Amplitude image of the borehole wall (ABI), contrast enhanced
- Mid: Radius values from travelttime
- Right: Acoustic (ABI) calliper from min., avg. and max. travelttime



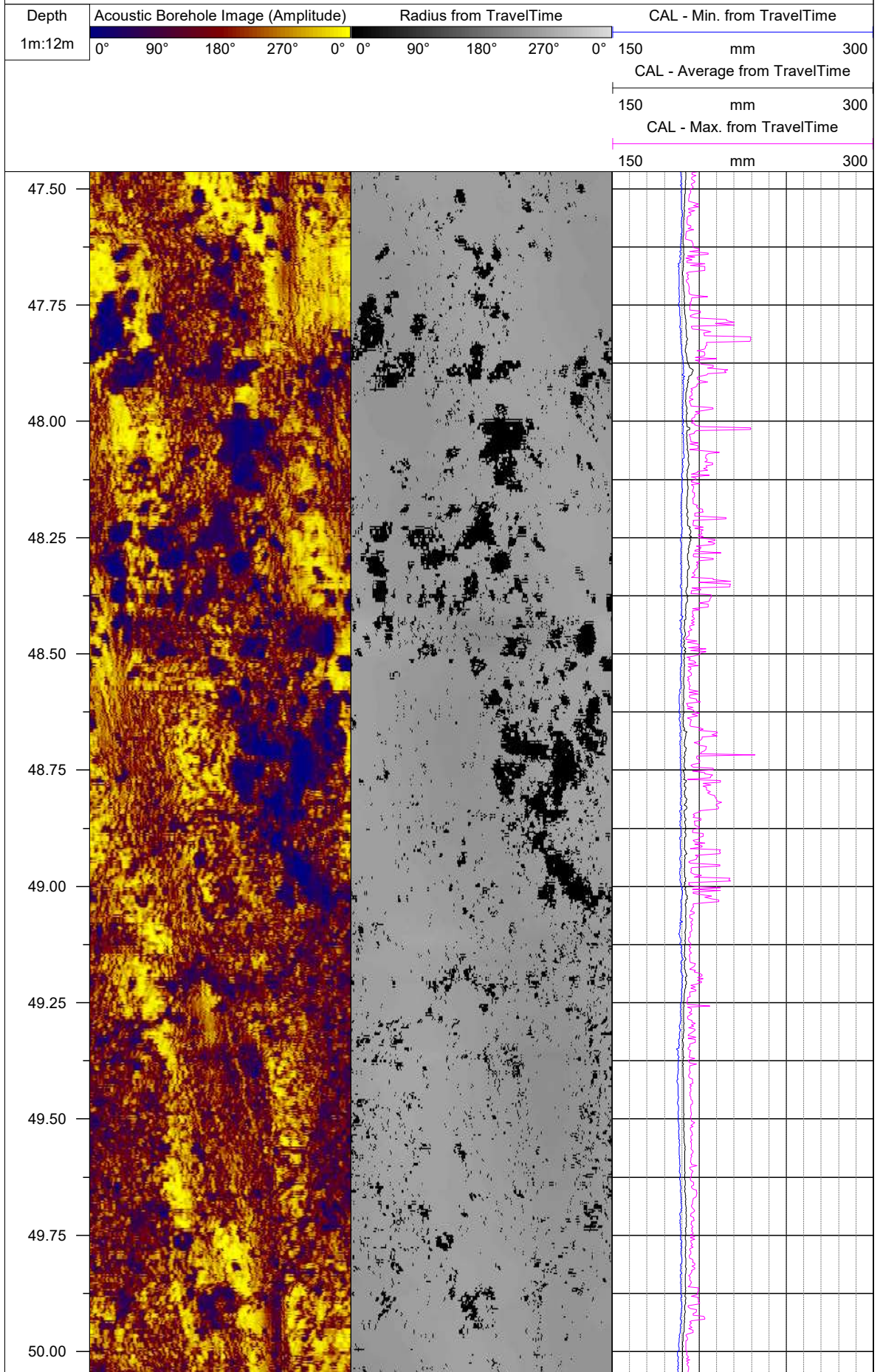
# Acoustic Borehole Imager (ABI) - Well R1, Hagen-Steltenberg

- Section: 37.1 - 133.6 m (reference: top casing), 17. May 2022
- Water level at 37.16m
- Left: Amplitude image of the borehole wall (ABI), contrast enhanced
- Mid: Radius values from travelttime
- Right: Acoustic (ABI) calliper from min., avg. and max. travelttime



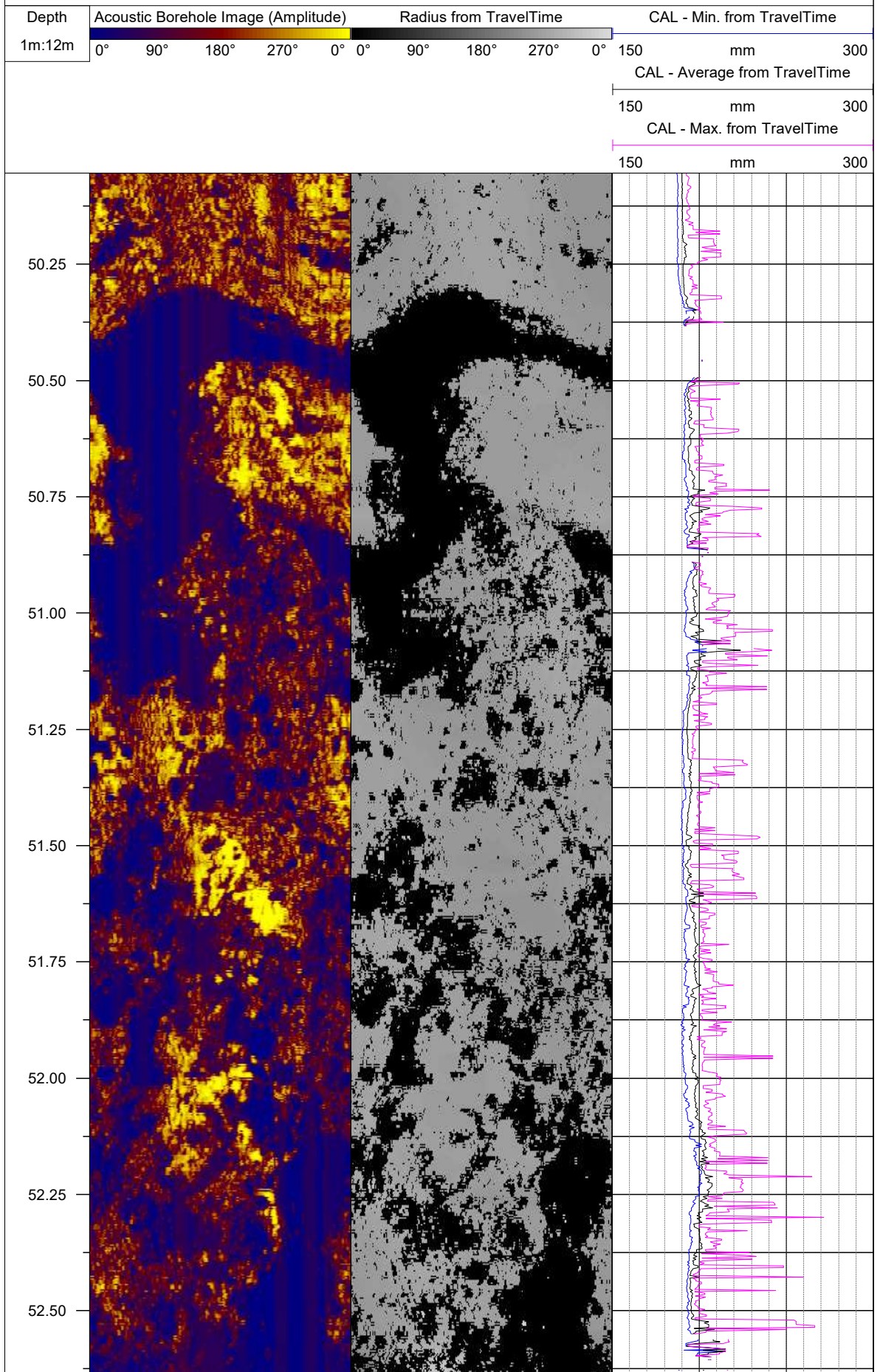
# Acoustic Borehole Imager (ABI) - Well R1, Hagen-Steltenberg

- Section: 37.1 - 133.6 m (reference: top casing), 17. May 2022
- Water level at 37.16m
- Left: Amplitude image of the borehole wall (ABI), contrast enhanced
- Mid: Radius values from travelttime
- Right: Acoustic (ABI) calliper from min., avg. and max. travelttime



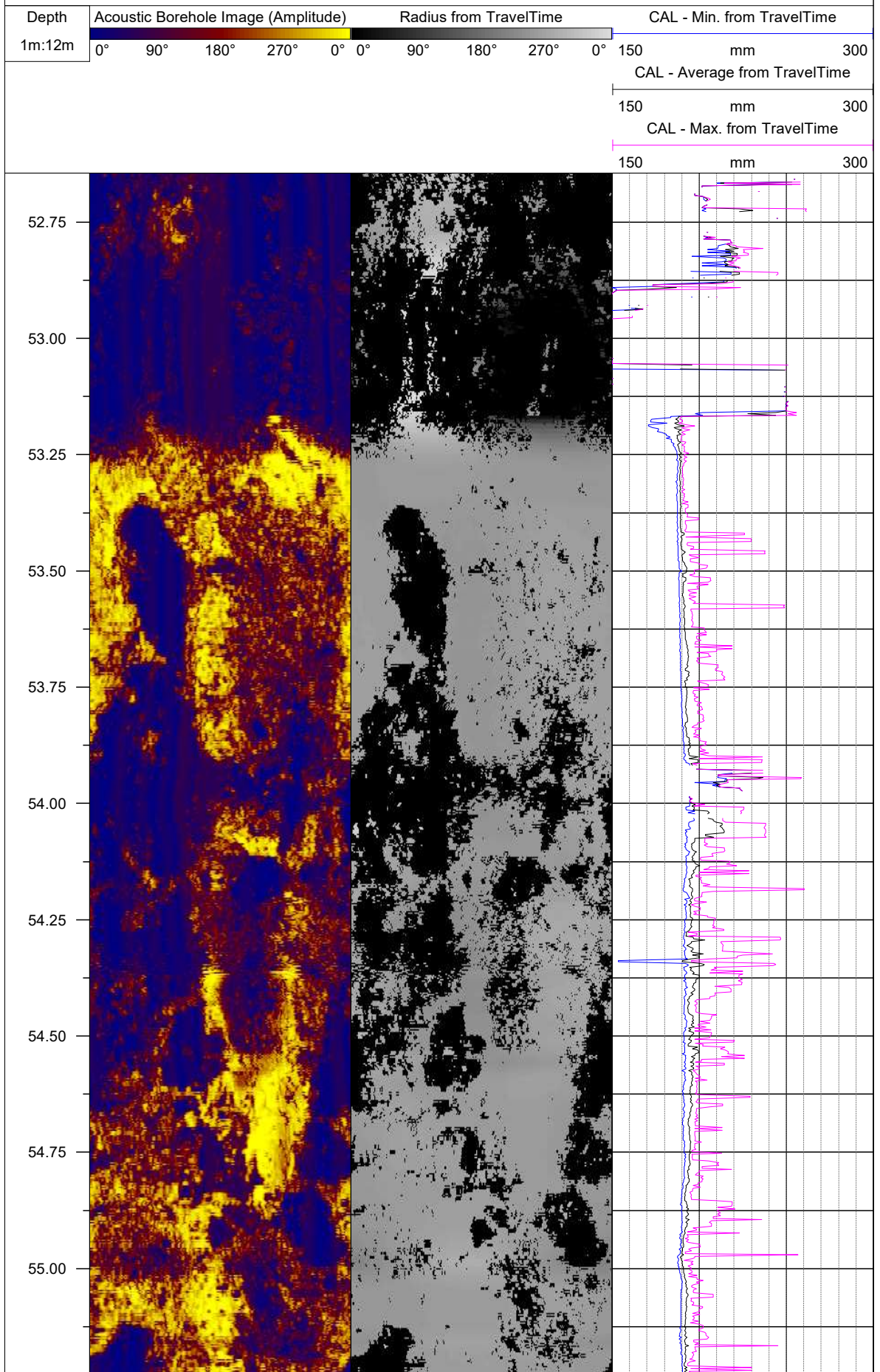
# Acoustic Borehole Imager (ABI) - Well R1, Hagen-Steltenberg

- Section: 37.1 - 133.6 m (reference: top casing), 17. May 2022
- Water level at 37.16m
- Left: Amplitude image of the borehole wall (ABI), contrast enhanced
- Mid: Radius values from travelttime
- Right: Acoustic (ABI) calliper from min., avg. and max. travelttime



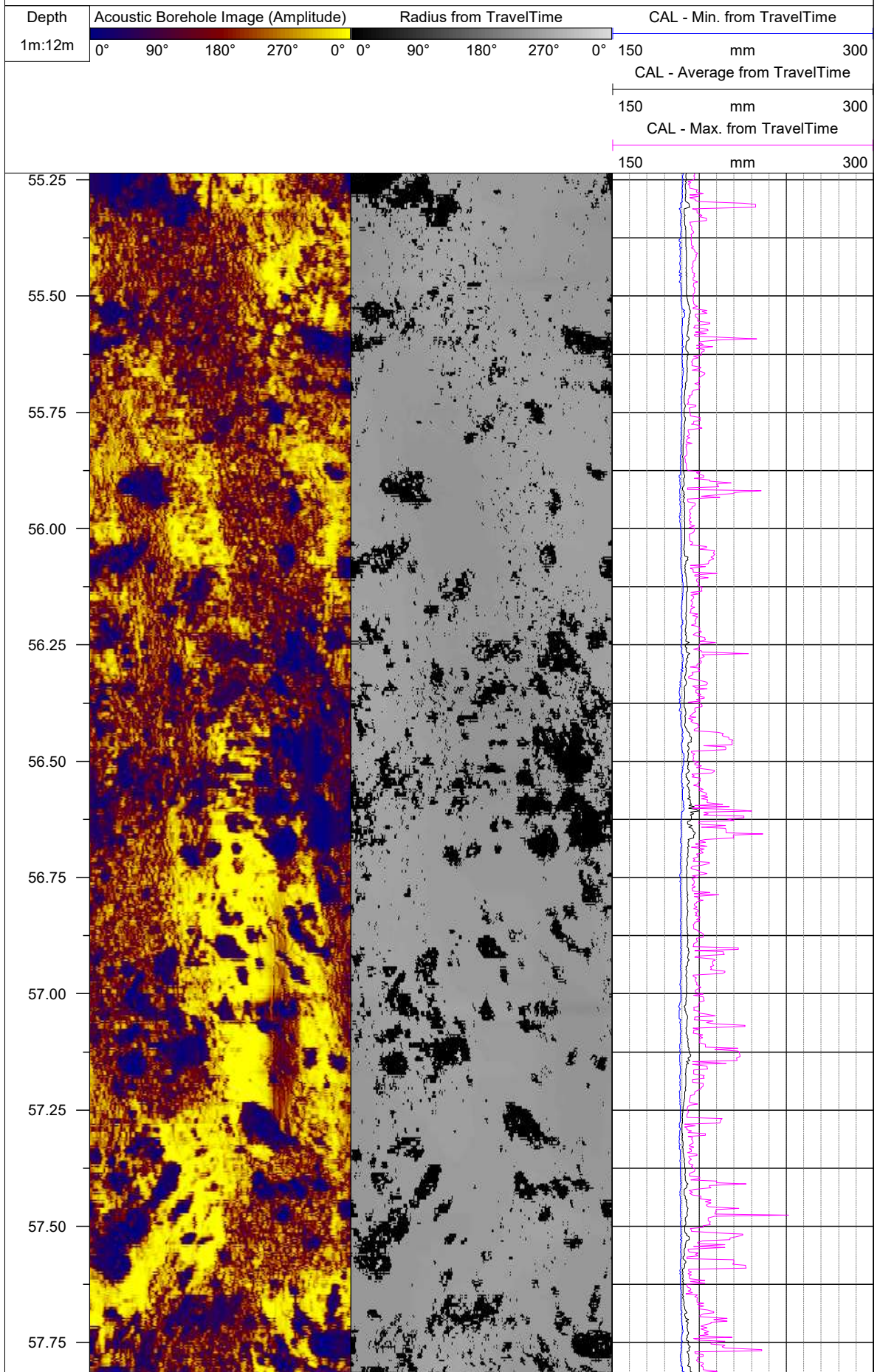
# Acoustic Borehole Imager (ABI) - Well R1, Hagen-Steltenberg

- Section: 37.1 - 133.6 m (reference: top casing), 17. May 2022
- Water level at 37.16m
- Left: Amplitude image of the borehole wall (ABI), contrast enhanced
- Mid: Radius values from travelttime
- Right: Acoustic (ABI) calliper from min., avg. and max. travelttime



# Acoustic Borehole Imager (ABI) - Well R1, Hagen-Steltenberg

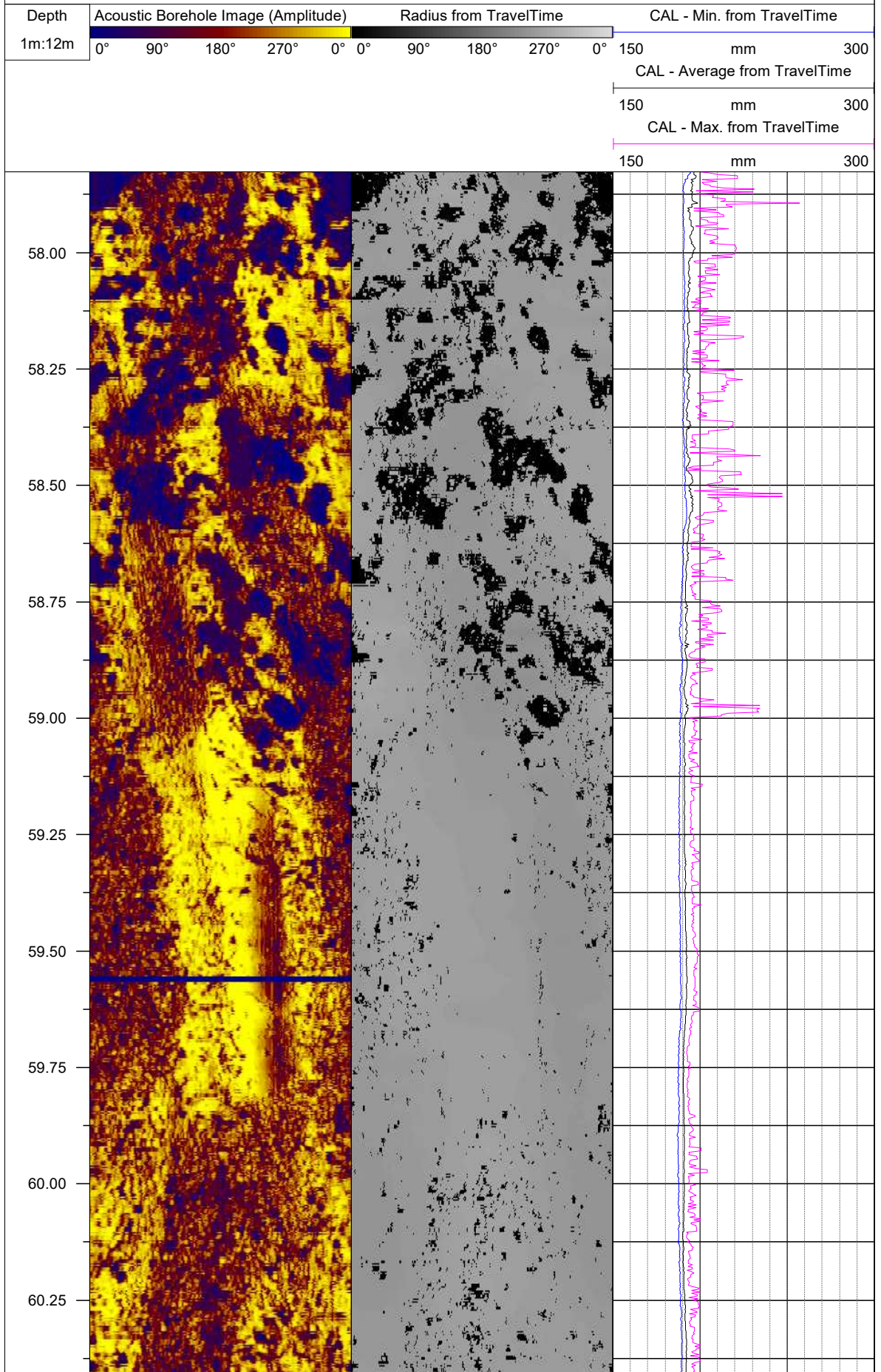
- Section: 37.1 - 133.6 m (reference: top casing), 17. May 2022
- Water level at 37.16m
- Left: Amplitude image of the borehole wall (ABI), contrast enhanced
- Mid: Radius values from travelttime
- Right: Acoustic (ABI) calliper from min., avg. and max. travelttime





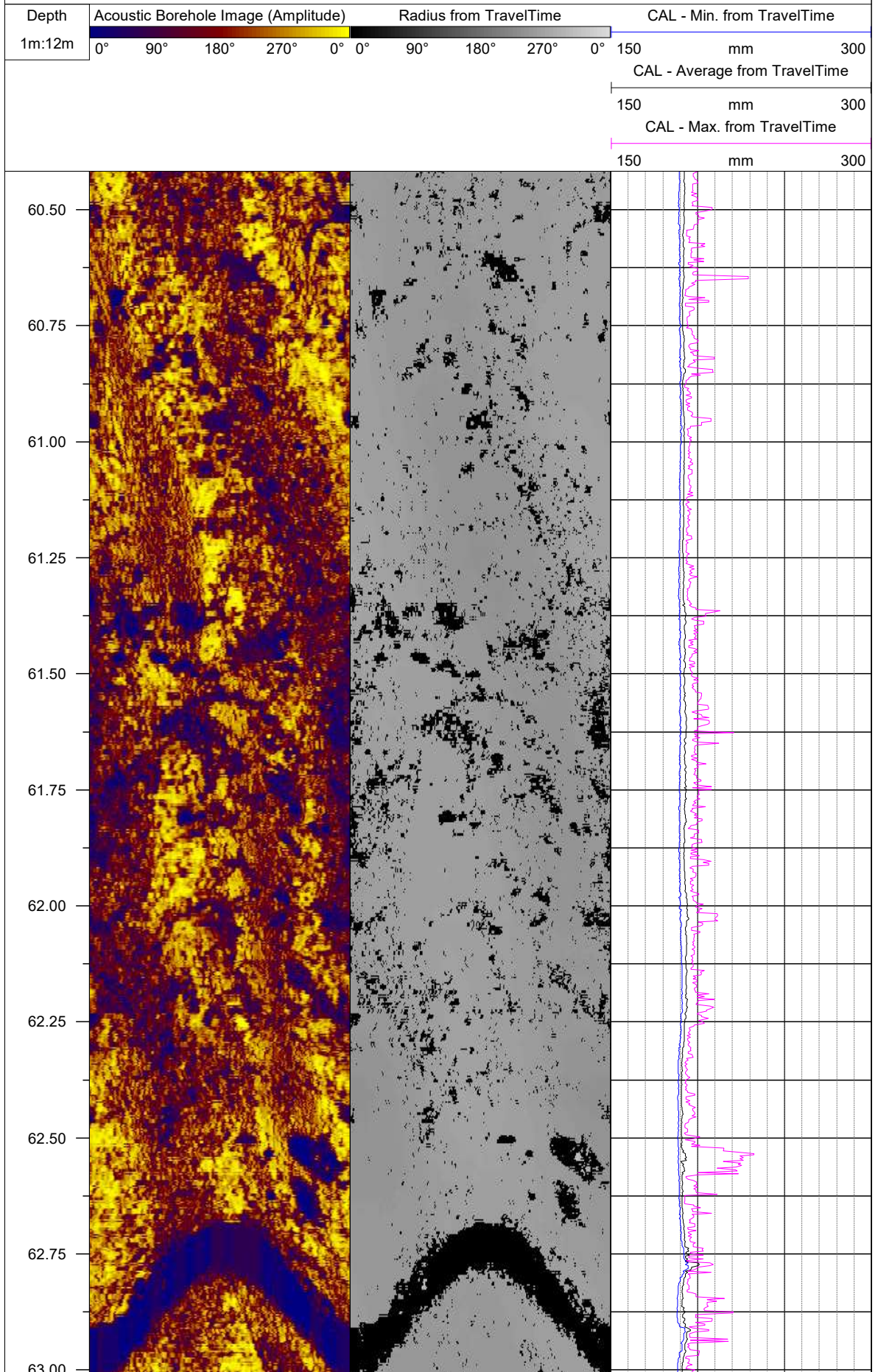
# Acoustic Borehole Imager (ABI) - Well R1, Hagen-Steltenberg

- Section: 37.1 - 133.6 m (reference: top casing), 17. May 2022
- Water level at 37.16m
- Left: Amplitude image of the borehole wall (ABI), contrast enhanced
- Mid: Radius values from travelttime
- Right: Acoustic (ABI) calliper from min., avg. and max. travelttime



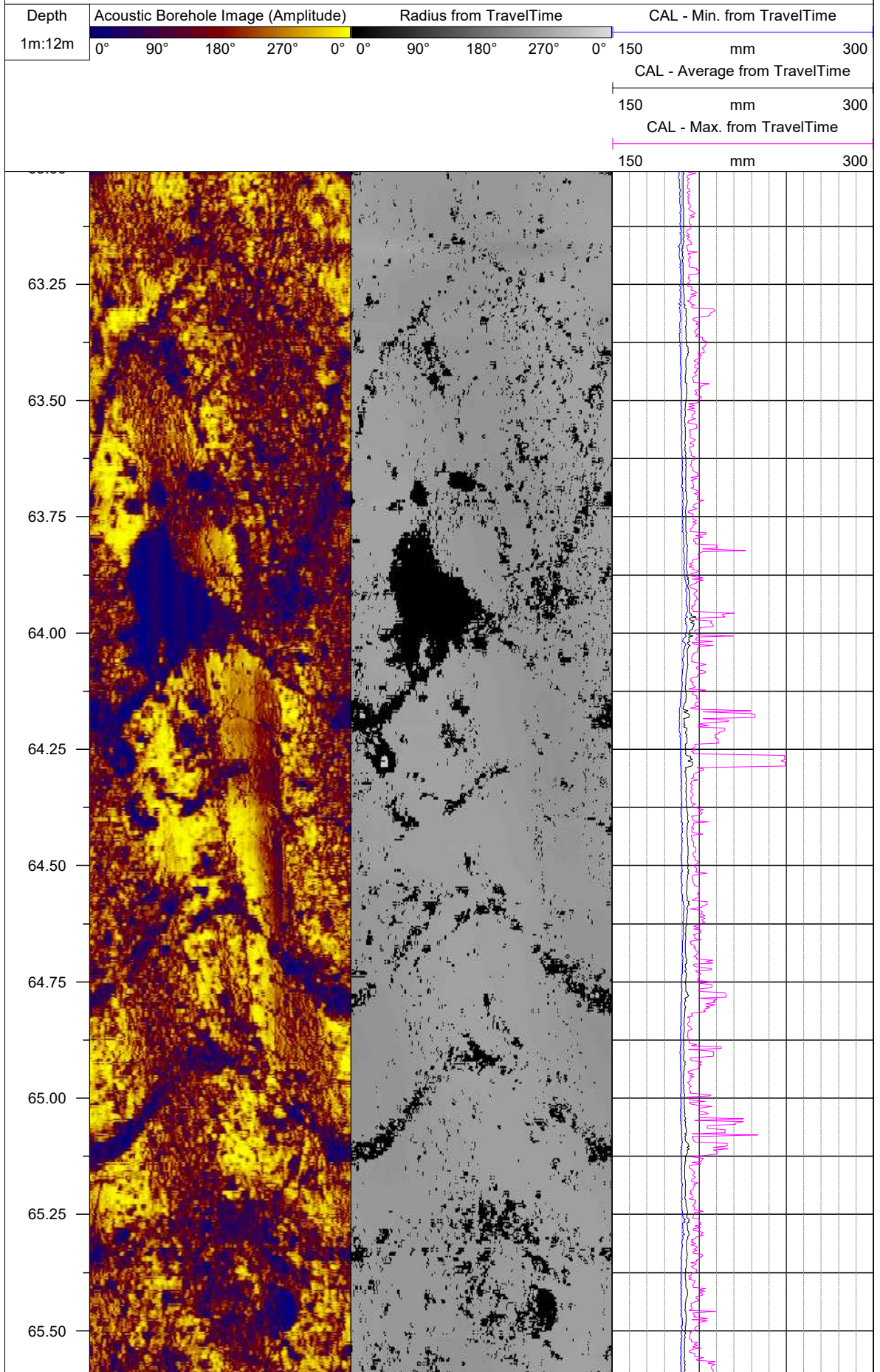
# Acoustic Borehole Imager (ABI) - Well R1, Hagen-Steltenberg

- Section: 37.1 - 133.6 m (reference: top casing), 17. May 2022
- Water level at 37.16m
- Left: Amplitude image of the borehole wall (ABI), contrast enhanced
- Mid: Radius values from travelttime
- Right: Acoustic (ABI) calliper from min., avg. and max. travelttime



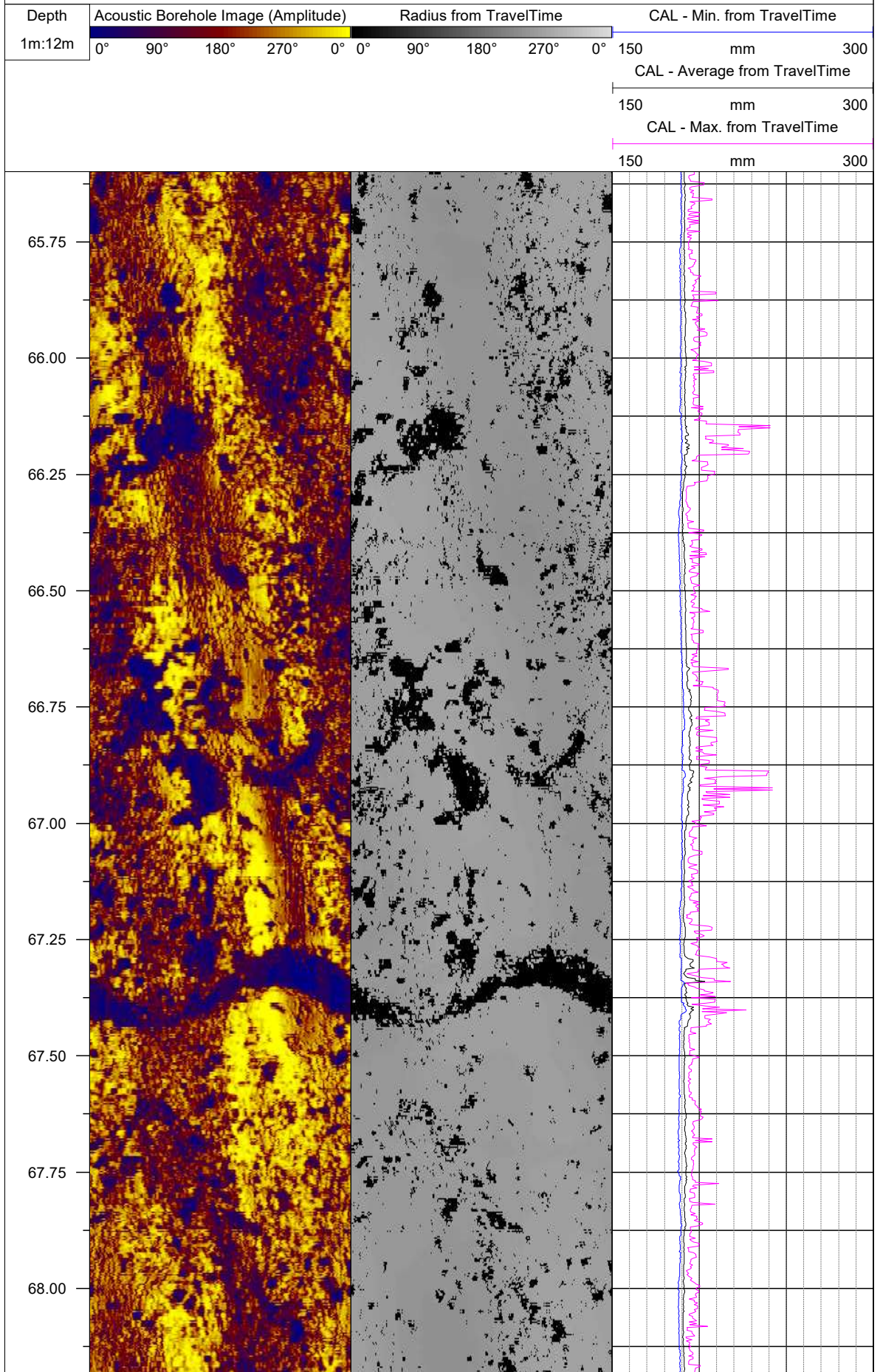
# Acoustic Borehole Imager (ABI) - Well R1, Hagen-Steltenberg

- Section: 37.1 - 133.6 m (reference: top casing), 17. May 2022
- Water level at 37.16m
- Left: Amplitude image of the borehole wall (ABI), contrast enhanced
- Mid: Radius values from travelttime
- Right: Acoustic (ABI) calliper from min., avg. and max. travelttime



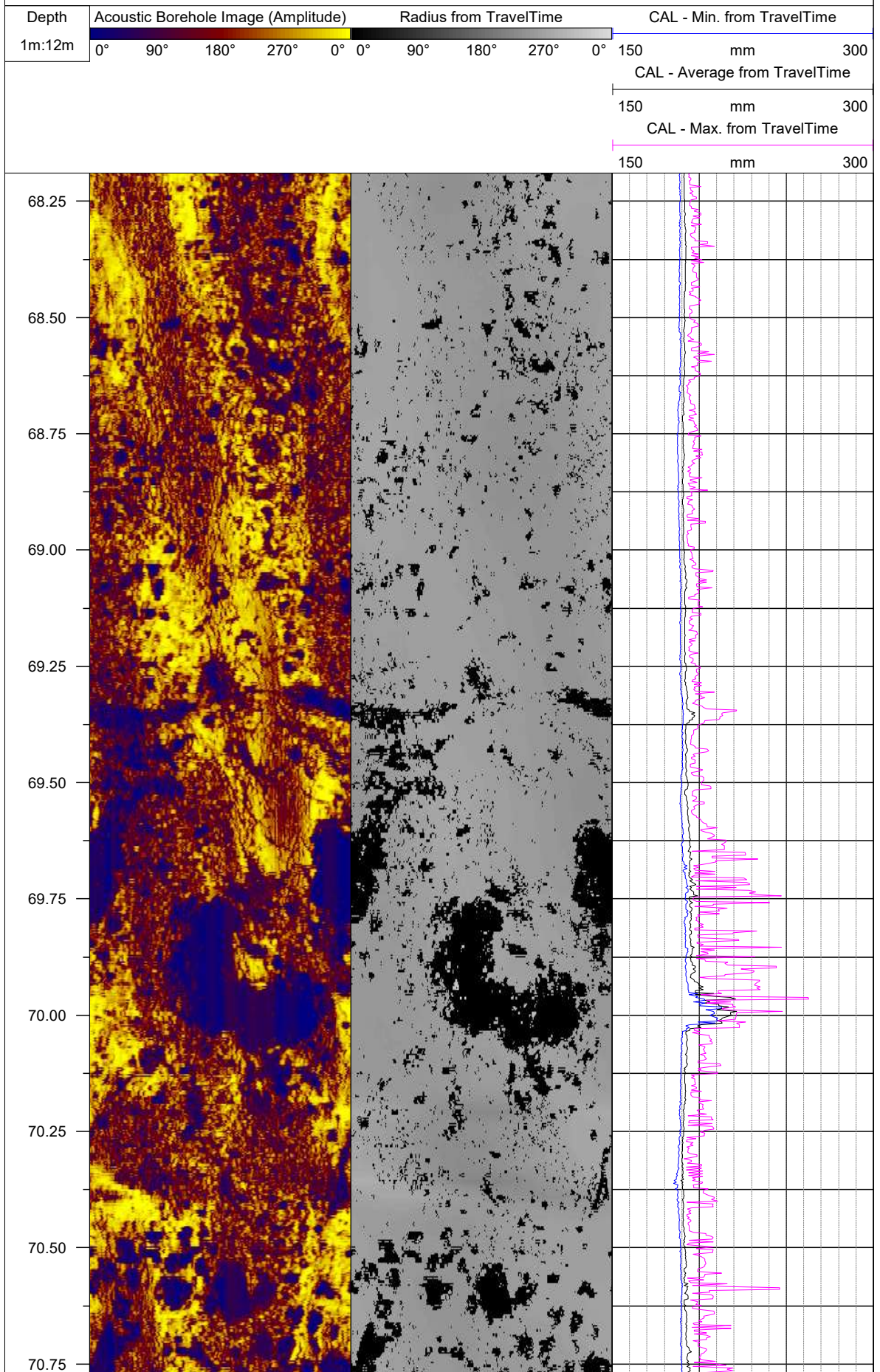
# Acoustic Borehole Imager (ABI) - Well R1, Hagen-Steltenberg

- Section: 37.1 - 133.6 m (reference: top casing), 17. May 2022
- Water level at 37.16m
- Left: Amplitude image of the borehole wall (ABI), contrast enhanced
- Mid: Radius values from traveltme
- Right: Acoustic (ABI) calliper from min., avg. and max. traveltme



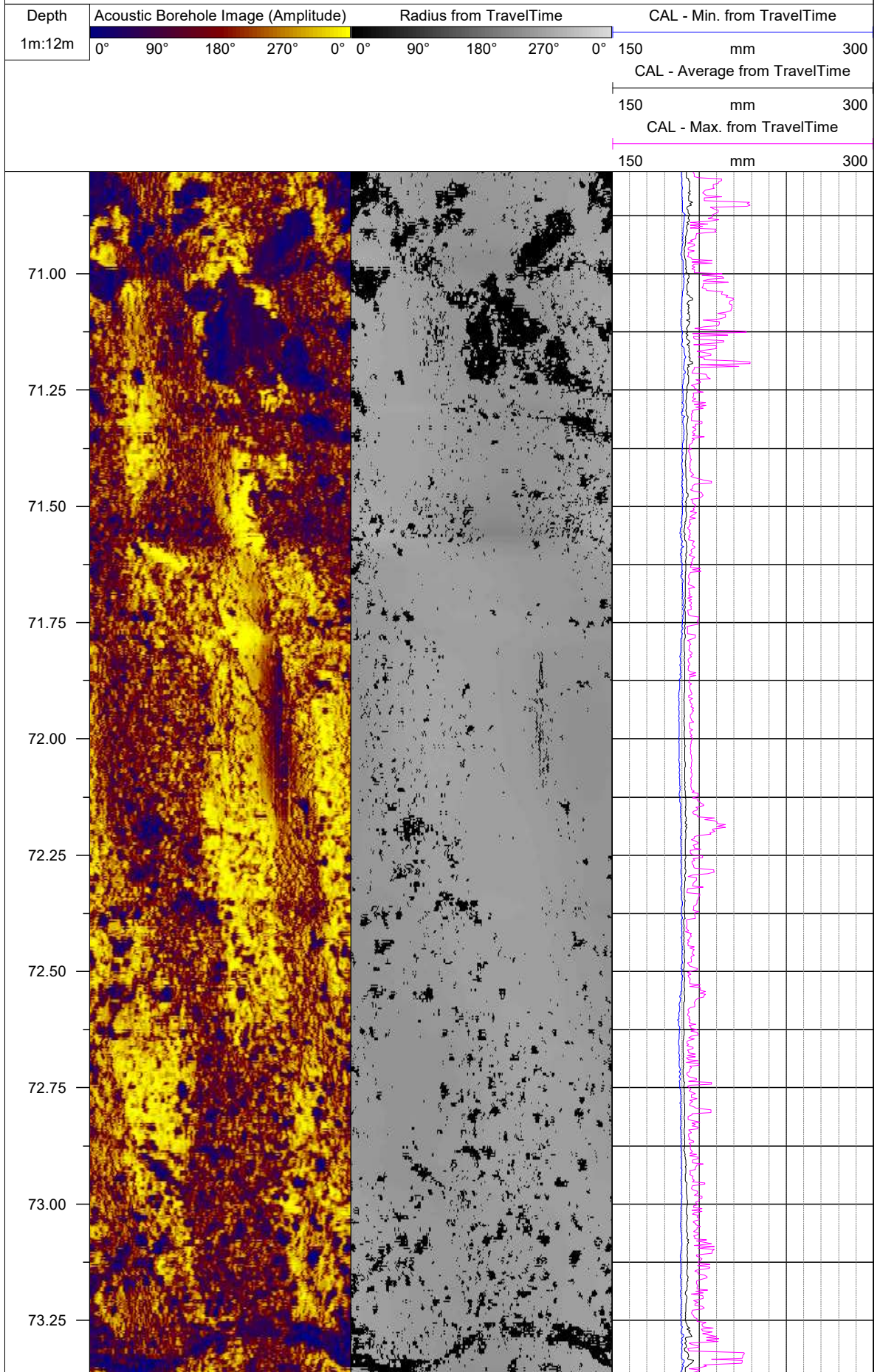
# Acoustic Borehole Imager (ABI) - Well R1, Hagen-Steltenberg

- Section: 37.1 - 133.6 m (reference: top casing), 17. May 2022
- Water level at 37.16m
- Left: Amplitude image of the borehole wall (ABI), contrast enhanced
- Mid: Radius values from travelttime
- Right: Acoustic (ABI) calliper from min., avg. and max. travelttime



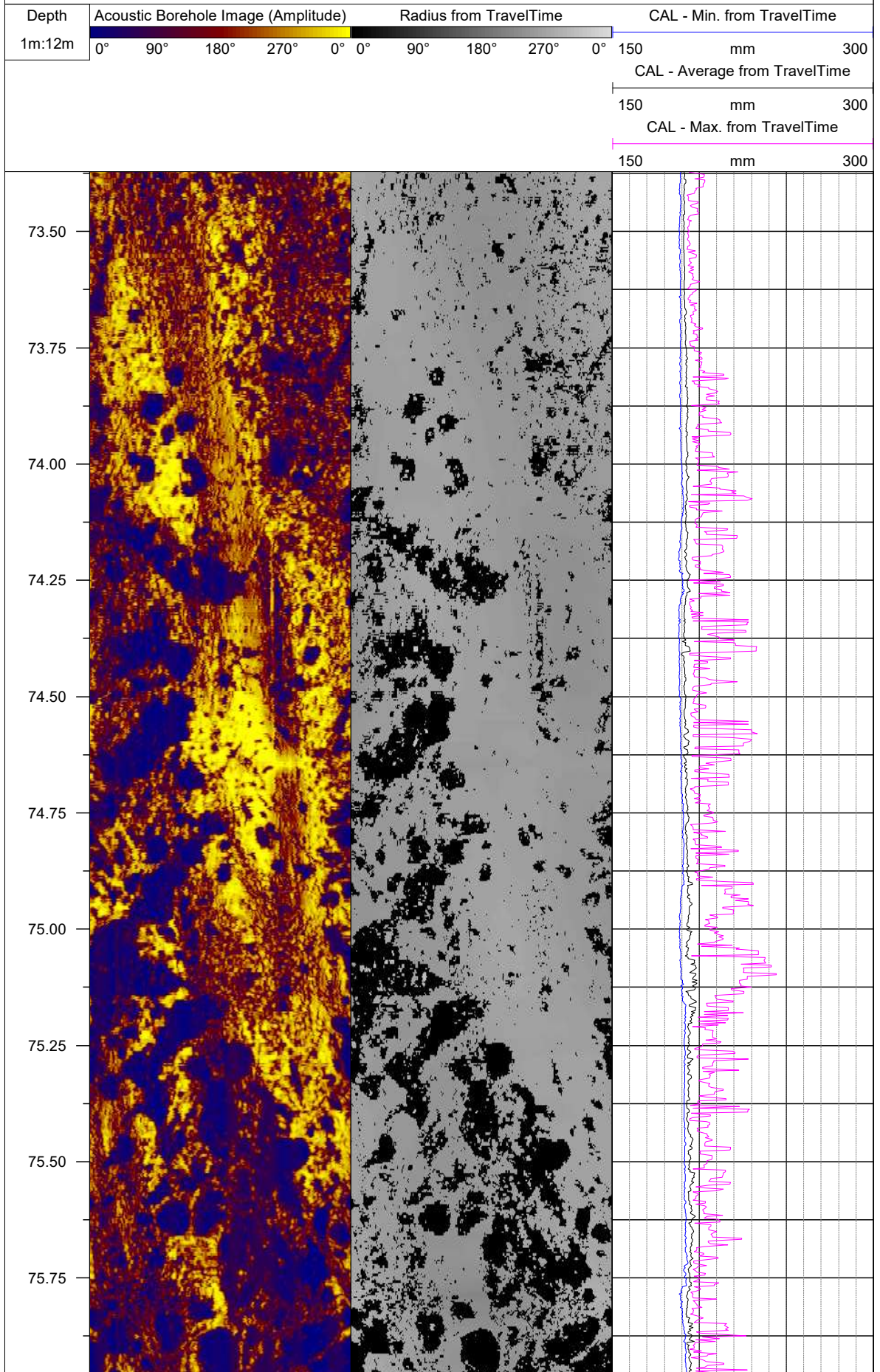
# Acoustic Borehole Imager (ABI) - Well R1, Hagen-Steltenberg

- Section: 37.1 - 133.6 m (reference: top casing), 17. May 2022
- Water level at 37.16m
- Left: Amplitude image of the borehole wall (ABI), contrast enhanced
- Mid: Radius values from travelttime
- Right: Acoustic (ABI) calliper from min., avg. and max. travelttime



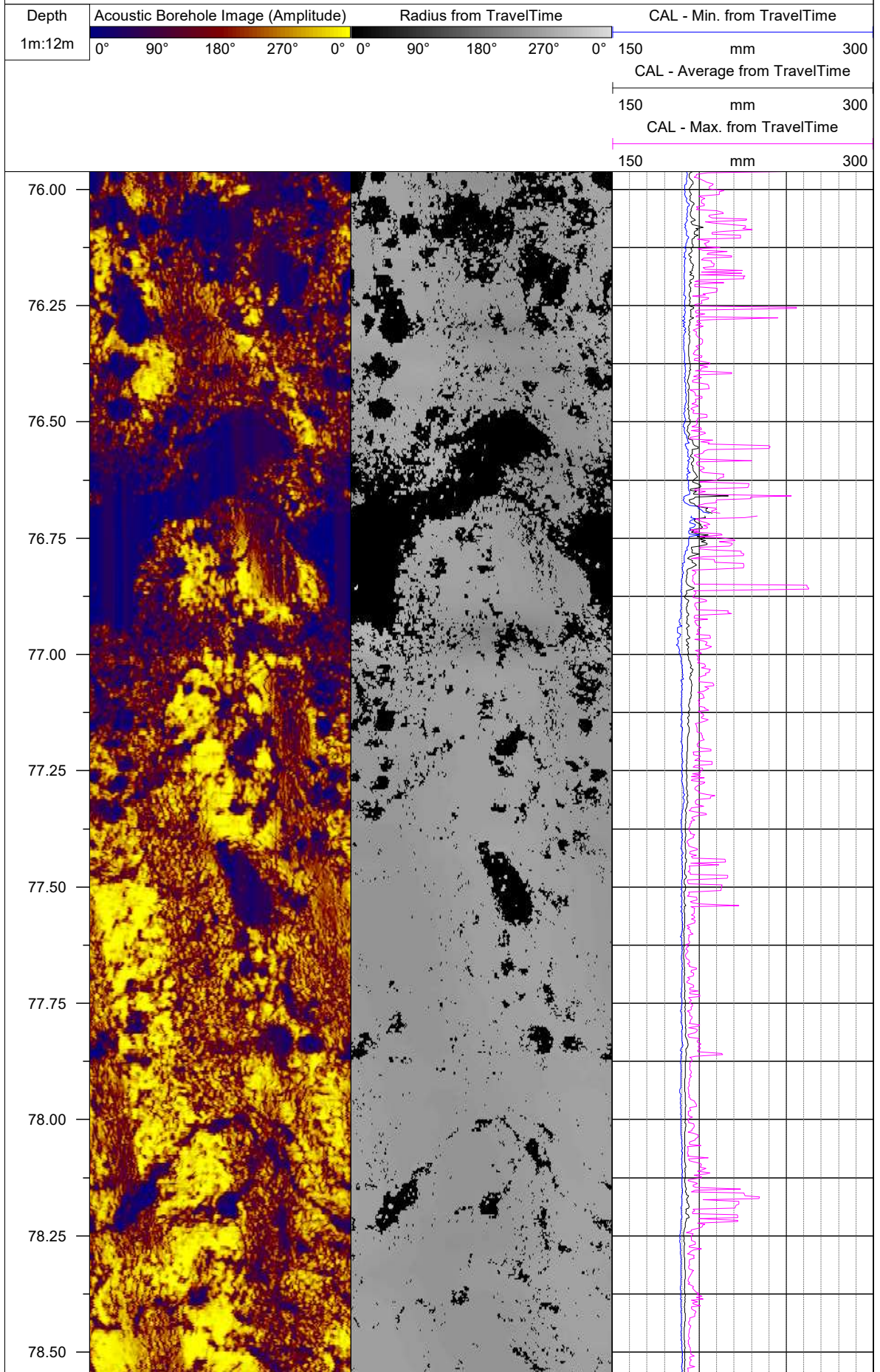
# Acoustic Borehole Imager (ABI) - Well R1, Hagen-Steltenberg

- Section: 37.1 - 133.6 m (reference: top casing), 17. May 2022
- Water level at 37.16m
- Left: Amplitude image of the borehole wall (ABI), contrast enhanced
- Mid: Radius values from travelttime
- Right: Acoustic (ABI) calliper from min., avg. and max. travelttime



# Acoustic Borehole Imager (ABI) - Well R1, Hagen-Steltenberg

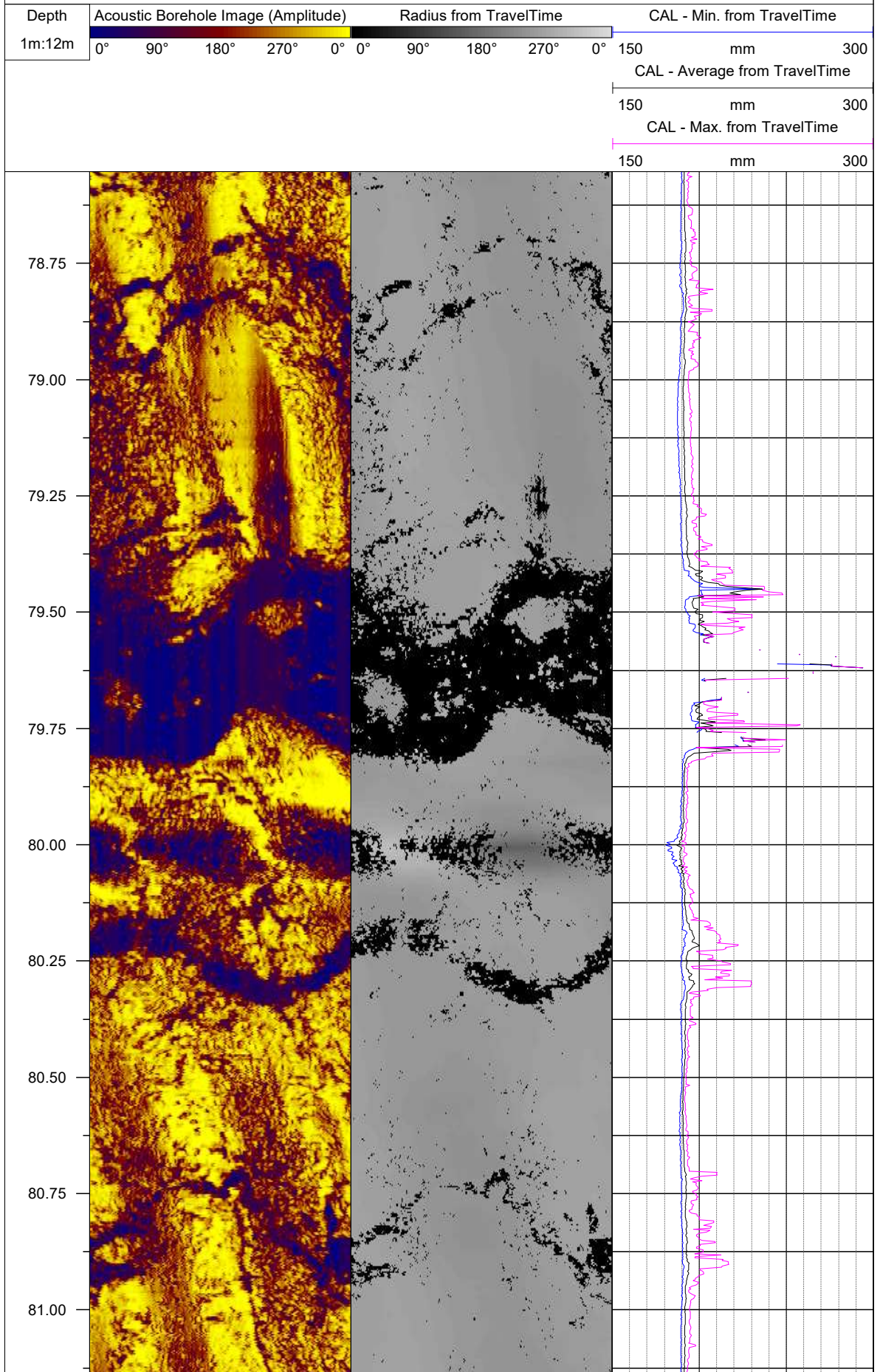
- Section: 37.1 - 133.6 m (reference: top casing), 17. May 2022
- Water level at 37.16m
- Left: Amplitude image of the borehole wall (ABI), contrast enhanced
- Mid: Radius values from travelttime
- Right: Acoustic (ABI) calliper from min., avg. and max. travelttime





# Acoustic Borehole Imager (ABI) - Well R1, Hagen-Steltenberg

- Section: 37.1 - 133.6 m (reference: top casing), 17. May 2022
- Water level at 37.16m
- Left: Amplitude image of the borehole wall (ABI), contrast enhanced
- Mid: Radius values from travelttime
- Right: Acoustic (ABI) calliper from min., avg. and max. travelttime



## Acoustic Borehole Imager (ABI) - Well R1, Hagen-Steltenberg

- Section: 37.1 - 133.6 m (reference: top casing), 17. May 2022
- Water level at 37.16m
- Left: Amplitude image of the borehole wall (ABI), contrast enhanced
- Mid: Radius values from travelttime
- Right: Acoustic (ABI) calliper from min., avg. and max. travelttime

